

1) Status of the notification

Final

2) Issuer

Name MITHRA PHARMACEUTICALS  
Identification number 0466-526-646

3) Reason for the notification

Acquisition or disposal of voting securities or voting rights  
Acquisition or disposal of financial instruments that are treated as voting securities

4) Notification by

A parent undertaking or a controlling person

5) Persons subject to the notification requirement

| Name                          | Address (for legal entities)  |
|-------------------------------|---|
| The Goldman Sachs Group, Inc. | Corporation Trust Center, 1209 Orange Street, Wilmington, DE 19801, USA |

6) Persons that dispose of voting rights (only to be filled in if art. 7 of the Law applies)

| Name | Address (for legal entities) |
|------|------------------------------|
|      |                              |

Please continue entering the information in **part II** concerning the persons referred to in Sections 5 and 6

Part II

7) Date on which the threshold is crossed

06/06/2022 (DD/MM/YYYY)

8) Threshold that is crossed (in %)

3

If the holding has fallen below the lowest threshold, you have the option of not entering any numbers in Section 10


9) Denominator

46,085,634


Please enter the denominator before filling in the data

10) Notified details

| A) Voting rights                     | Previous notification<br># of voting rights | After the transaction |                              |                      |                              |
|--------------------------------------|---|-----------------------|------------------------------|----------------------|------------------------------|
|                                      |   | # of voting rights    |                              | % of voting rights   |                              |
| Holder of voting rights              |   | Linked to securities  | Not linked to the securities | Linked to securities | Not linked to the securities |
| The Goldman Sachs Group, Inc.        |   |                       |                              |                      |                              |
| Goldman Sachs International          |   | 730,102               |                              | 1.58%                |                              |
| Goldman Sachs Asset Management, L.P. |   | 1,109                 |                              | 0.00%                |                              |
| Subtotal                             |   | 731,211               |                              | 1.59%                |                              |
| <b>TOTAL</b>                         |   | <b>731,211</b>        | <b>0</b>                     | <b>1.59%</b>         | <b>0.00%</b>                 |

 Start with "groups" of holders. Add subtotals with  $\Sigma$ , and then finish with the persons who are "alone".  
For groups, start with the ultimate controlling natural person or legal entity.  
The totals, subtotals and % will be updated once you have clicked on **<CALCULATE>**.

| B) Equivalent financial instruments | After the transaction                      |                              |                 |                         |  |                    |            |
|-------------------------------------|--|------------------------------|-----------------|-------------------------|--|--------------------|------------|
|                                     | Holder of equivalent financial instruments | Type of financial instrument | Expiration date | Exercise period or date | # of voting rights that may be acquired if the instrument is exercised | % of voting rights | Settlement |
| Goldman Sachs International         | Securities Lending                         |                              | Open            | 814,271                 | 1.77%  | physical           | -          |
| Goldman Sachs & Co. LLC             | Securities Lending                         |                              | Open            | 4,311                   | 0.01%  | physical           | -          |
| Goldman Sachs Bank Europe SE        | Securities Lending                         |                              | Open            | 22,447                  | 0.05%  | physical           | +          |
| TOTAL                               |  |                              |                 | 841,029                 | 1.82%  |                    |            |

 The totals will be updated once you have clicked on <CALCULATE>

|                  |                    |                    |
|------------------|--------------------|--------------------|
| TOTAL (A & B)    | # of voting rights | % of voting rights |
| <b>CALCULATE</b> | 1,572,240          | 3.41%              |

11) Full chain of controlled undertakings through which the holding is effectively held, if applicable

Please refer to Annexure - Structure Chart

12) In case of proxy voting for only one GM

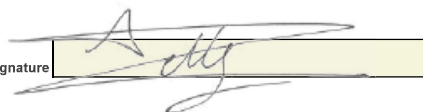
Holder  will cease to hold / will hold again  0 voting rights as of  (DD/MM/YYYY)

13) Additional information

Done at  Paris

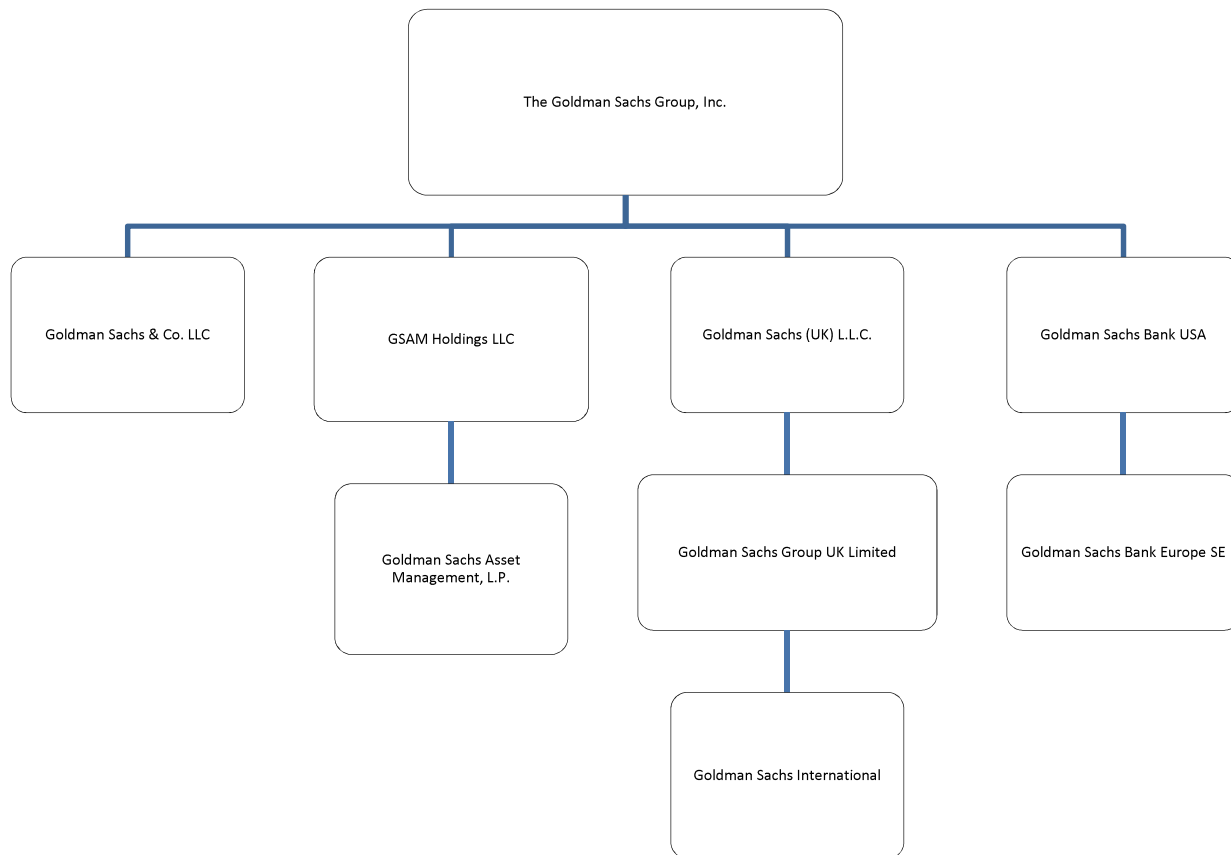
On  08/06/2022 (DD/MM/YYYY)

Name & capacity  Papa Lette, Executive Director

Signature 

Chain of Controlled Undertakings:

- GOLDMAN SACHS INTERNATIONAL IS CONTROLLED BY GOLDMAN SACHS GROUP UK LIMITED WHICH IS CONTROLLED BY GOLDMAN SACHS (UK) L.L.C. WHICH IS CONTROLLED BY THE GOLDMAN SACHS GROUP, INC.
- GOLDMAN SACHS ASSET MANAGEMENT, L.P. IS CONTROLLED BY GSAM HOLDINGS LLC WHICH IS CONTROLLED BY THE GOLDMAN SACHS GROUP, INC.
- GOLDMAN SACHS & CO. LLC IS CONTROLLED BY THE GOLDMAN SACHS GROUP, INC.
- GOLDMAN SACHS BANK EUROPE SE IS CONTROLLED BY GOLDMAN SACHS BANK USA WHICH IS CONTROLLED BY THE GOLDMAN SACHS GROUP, INC.



Note: The above structure chart reflecting the chain of controlled undertakings is based on voting rights only. For the purpose of aggregation and representation, only entities that have more than 50% of the voting shares are regarded as a controlled undertaking under the substantial shareholder disclosure rules. The structure chart comprises only GS entities which are part of the notification.

